

Protecting *Life* from *Landslide Disasters!!*

What are landslide disasters?

Landslide disasters are terrifying disasters mainly caused by heavy rains or earthquakes that can instantly take our life and property when a sudden cliff collapses or when water mixes with soil and washes away.

Landslide disasters have occurred in the past in Shiga Prefecture, resulting in loss of homes and lives.



Have you done your daily preparation?

"Daily preparation" and "Checking disaster prevention information" are important to protect yourself from landslide disasters.

Point 1

Daily preparation

Always know where the locations of evacuation shelters and areas at risk of landslide are, and confirm the evacuation routes with your family!

See below for details



Point 2

Check Disaster Prevention information

Check disaster prevention information on TV tickers and online, etc. when there is an emergency!

Details on other side ⇒

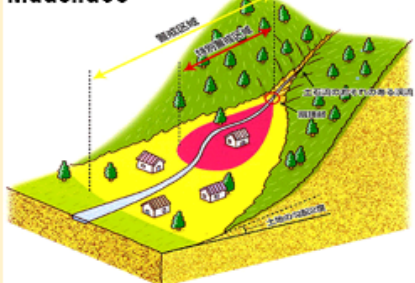


What areas are at risk of landslide ?

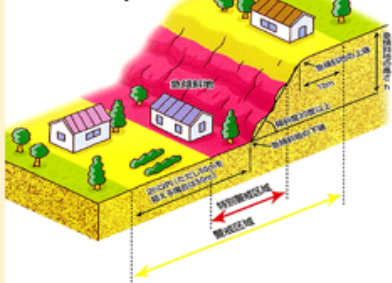


Shiga Prefecture conducts site surveys on valleys and cliffs at risk of landslide and designates and publishes **Landslide Alert Areas** and **Special Landslide Alert Areas** to protect the lives of residents from landslides.

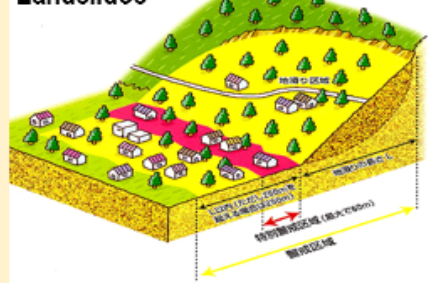
Mudslides



Cliff collapses



Landslides



First, check this out!!

Check risk areas and the locations of evacuation shelters on hazard maps or on the Shiga Prefecture website.

Shiga Prf. Landslide Disaster Prevention Information Map

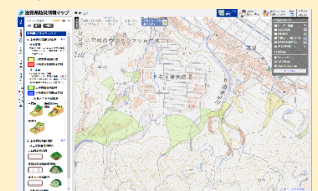
Check here for information on landslide alert areas and special landslide alert areas.

URL: <https://shiga-bousai.jp/dmap/top/index>

(Mobile version)



Shiga Pref. Disaster Prevention Information Map



Results of Landslide Alert Area Surveys

Published on the Shiga Prefecture website. Check here for the latest survey results.

URL: <http://www.pref.shiga.lg.jp/kensei/gaiyou/soshiki/dobokukotsubu/sabouka/index.html>

Hazard Maps

Published on municipal websites. Check the locations of evacuation shelters and disaster risk areas, etc.

On the other side is information on rainfall and disaster prevention!

(2) Use of Disaster Prevention Information

Be sure to check weather and evacuation information in the event of heavy rain!!

Landslide disasters mainly occur due to the loosening of ground from prolonged rain. During heavy rain events, pay attention to disaster prevention information on TV tickers and online. In particular, refer to the "Alert Levels" below to know when you should evacuate.

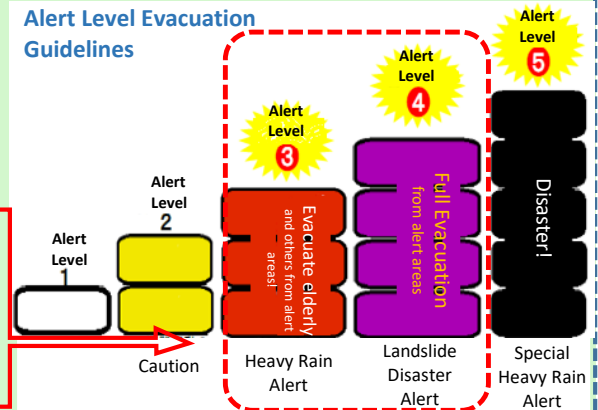


What is Alert Level Information

"Alert Levels" are a system that announces the degree of danger on a 5-level scale, as shown on the right, giving an indication as to when to evacuate.

If you are in an area where there is a risk of a disaster, please evacuate early at Level 4 (or Level 3 especially for elderly people and others who require time to evacuate).

Alert Level Evacuation Guidelines



Sharing Shiga Safety and Security Information

Shira-Shiga Mail
Shira-Shiga Line



Get important information anywhere, anytime!



Shira-Shiga Mail (and LINE) is a service that provides information from the government of Shiga Prefecture, direct to your mobile phone or computer, by email or on LINE.

By registering, you will be able to get the latest information when alert levels are announced for your area. Please join us.

Shiga Prefecture Civil Engineering Disaster Prevention Information System

Please check the Shiga Prefecture Civil Engineering Disaster Prevention Information System for more detailed disaster prevention information.

Check various information such as rainfall forecasts and landslide disaster rainfall risk in real time.

Register Here

Shira-Shiga Mail



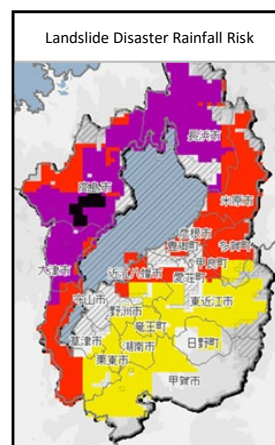
Send an empty email to the address below.
Email to login@pref-shiga-info.mailio.jp
(Can also be accessed from the QR code on the left)

Shira-Shiga LINE



Search for the official Shira-Shiga LINE account and add it as a friend.

(Can also be accessed from the QR code on the left)



Each 1km² square on the map is colored according to its landslide disaster risk. The alert levels indicated by each color are shown below. Please reference this in the event of heavy rain.

Imminent Disaster (equivalent to Alert Level 5)

Danger (equivalent to Alert Level 4)

Warning (equivalent to Alert Level 3)

Caution (equivalent to Alert Level 2)

Shiga Prefecture Civil Engineering Disaster Prevention Information System



URL:

<https://shiga-bousai.jp/index.php>