

Open fires

Prohibited

Violating the law by burning waste outdoors will result in a fine of up to 10 million yen and/or up to five years in prison.

(*In addition to the above, corporations will be subject to a fine of up to 300 million yen)



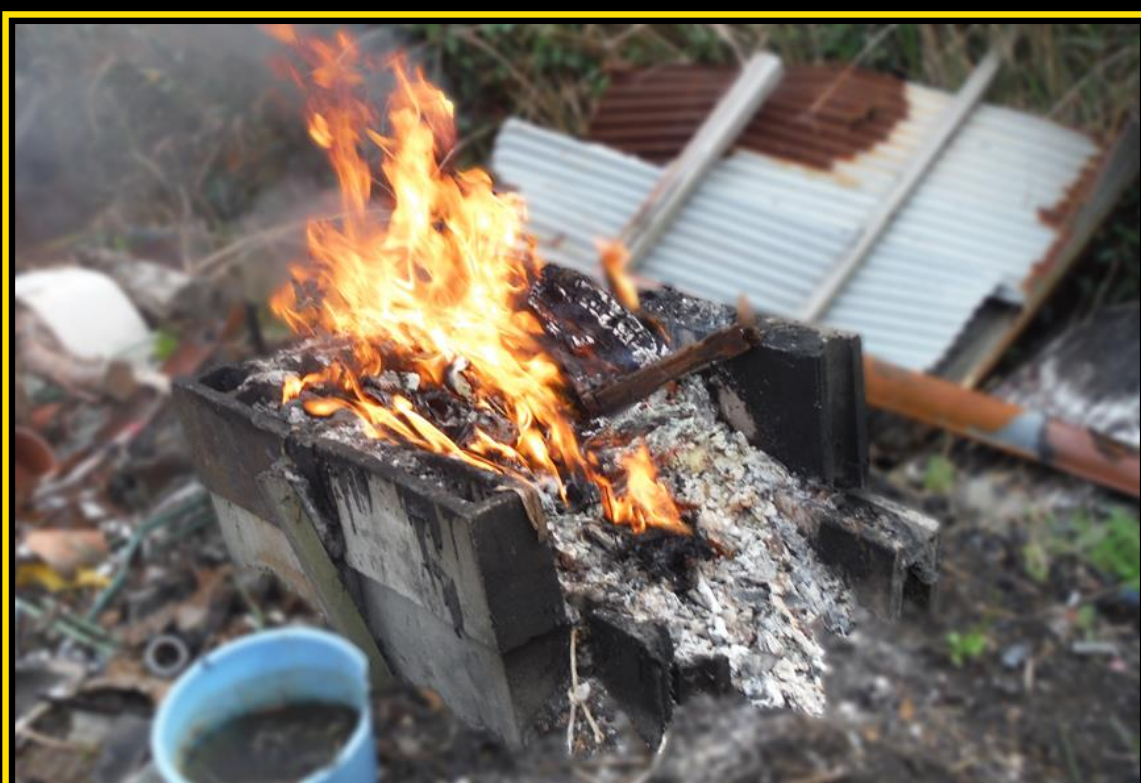
Incineration on the ground or
in holes dug into the ground



Incineration in drum cans



Incineration in non-compliant
incinerators



Incineration in wall-block fires, etc.

Shiga Prefecture

● Incineration Prohibition 《Article 16-2 of the Law》

Law: Waste Disposal and Cleaning Law

Waste shall not be incinerated, except by the following methods.

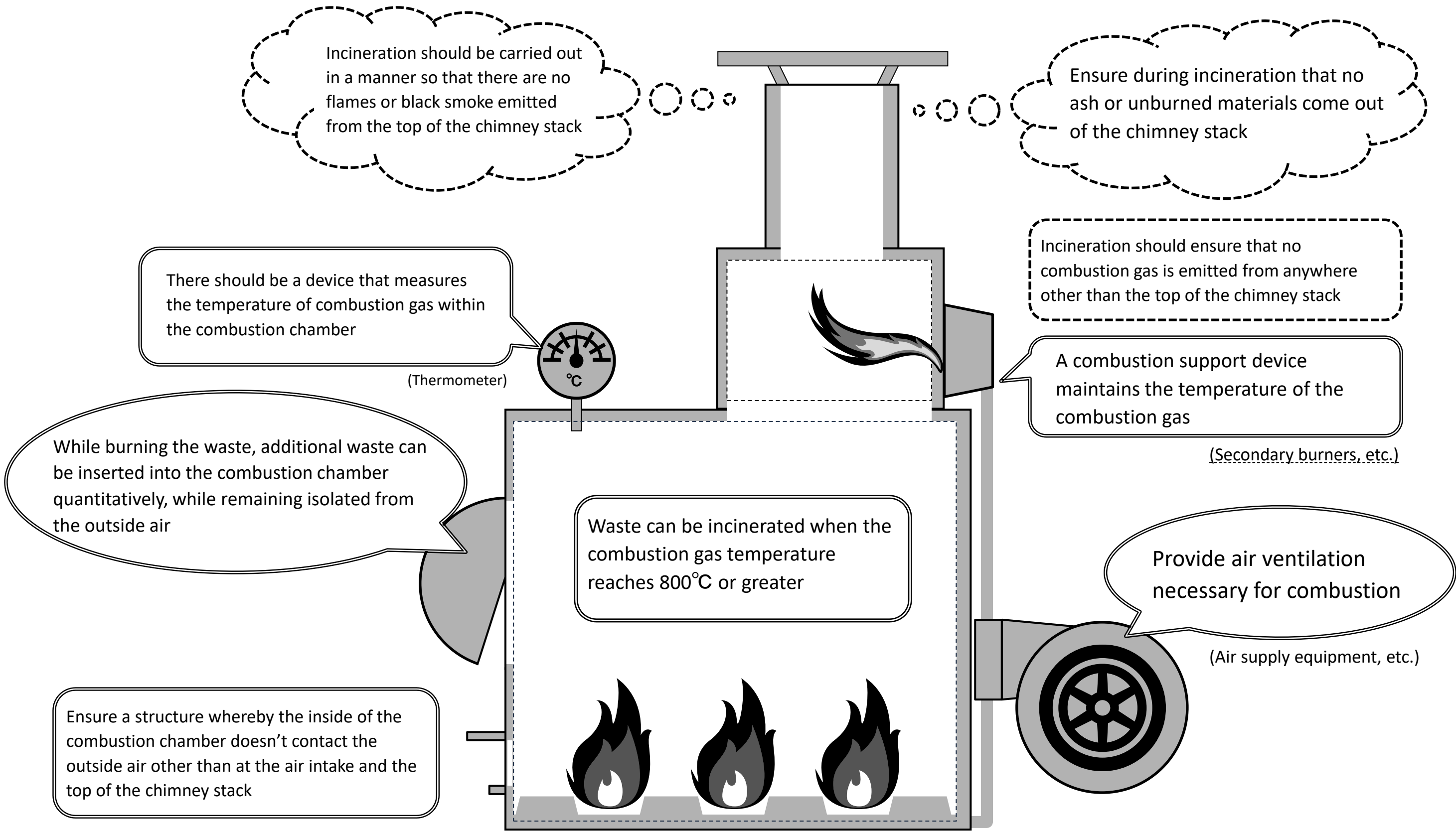
- 1 Incineration of waste in accordance with the General Waste Disposal Standards, Specially Controlled General Waste Disposal Standards, Industrial Waste Disposal Standards, and Specially Controlled Industrial Waste Disposal Standards
- 2 Incineration of waste conducted for the disposal of waste under other laws and regulations
- 3 Incineration of waste required for the public interest or in accordance with social custom, or having a minor impact on the surrounding living environment, as specified by government ordinance

Exceptions to the prohibition on waste incineration under government ordinance

- 1 Incineration of waste required for the management of national or local government facilities
- 2 Incineration of waste required for the prevention, emergency response, or recovery from earthquakes, storms, floods, fires, frost damage, or other disasters
- 3 Incineration of waste as required by custom or for religious ceremonies
- 4 Incineration of waste necessary for agriculture, forestry, or fishing activities
- 5 Bonfires and other minor waste incineration in normal daily life

● Structure of Incineration Equipment and Methods Specified by the Minister of the Environment

When incinerating waste, incineration equipment must meet legally designated standards, and the incineration must be carried out in a manner specified by the Minister of the Environment.



- (1) These specifications apply regardless of the size of the incinerator.
- (2) These specifications apply even when the exhaust gas standards from the Act on Special Measures against Dioxins are complied with.
- (3) These specifications apply regardless of whether general or industrial waste, and whether personal waste or waste of another party.

Note: This figure sets out the basic structural standards for incinerators. Stricter standards apply to incineration equipment specified under Article 15 of the law.

Inquiries

Waste Management Office, Recycling Society Promotion Division,
Department of Lake Biwa and the Environment, Shiga Prefecture

4-1-1 Kyo-machi, Otsu

Tel: 077-528-3475 Fax: 077-528-4845

Southern Shiga Office of Environmental Affairs

(Kusatsu, Moriyama, Ritto, Yasu)

3-14-75 Kusatsu, Kusatsu

Tel : 077-567-5456 Fax: 077-564-1733

Koka Office of Environmental Affairs (Koka, Konan)

6200 Minakuchi, Minakuchi-cho, Koka

Tel : 0748-63-6134 Fax: 0748-63-6135

Higashiomi Office of Environmental Affairs

(Omihachiman, Higashiomi, Hino, Ryuo)

7-23 Yokaichi Midori-machi, Higashiomi

Tel : 0748-22-7759 Fax: 0748-22-0411

Eastern Shiga Office of Environmental Affairs

(Hikone, Aisho, Toyosato, Kora, Taga)

4-1 Moto-machi, Hikone

Tel : 0749-27-2255 Fax: 0749-27-1688

Northern Shiga Office of Environmental Affairs

(Nagahama, Maibara)

1152-2 Hirakata-cho, Nagahama

Tel : 0749-65-6653 Fax: 0749-63-4040

Takashima Office of Environmental Affairs (Takashima)

1758 Imazu, Imazu-cho, Takashima

Tel : 0740-22-6066 Fax: 0740-22-6105

Industrial Waste Management Division, Environment Department, Otsu City
(Otsu)

3-1 Goryo-cho, Otsu

Tel : 077-528-2910 Fax: 077-523-1560