

# “Shiga Multicultural Coexistence Promotion Plan” overview.

## (3<sup>rd</sup> Revised Edition)

### 1. Revisions

Goal	<div>○In 1989, the Immigration Control and Refugee Recognition Act was revised, and the number of foreigners, including those of Japanese descent from the South American region, increased rapidly, resulting in the formulation of the Shiga Multicultural Coexistence Promotion Plan in 2010.</div> <div>○Since 2014, the foreign population seeking employment has increased rapidly, especially those from Southeast Asia, By the end of 2024, that number reached a record high of 41,475 people. Due to revisions in the residency system in recent years, the number of foreigners and their families seeking employment is expected to rise.</div> <div>○<u>Going forward, the percentage of foreigners living in the prefecture is expected to increase, and it will become increasingly important to be conscious that we are all living in the same community and need to support each other.</u></div>
Plan Layout	<u>A guideline to show the approach that each actor takes</u> in order to create a multicultural society.
Intended Audience	Since the realization of a multicultural society is a matter of everyone working together as members of a community to live together <u>regardless of nationality, race, or other differences, this plan is intended for all prefectural residents.</u>
Program Period	Five years from FY2025 to FY 2029

### <<What is Multicultural Coexistence?>>

For people of different nationalities, ethnicities, etc. to live together as members of a local community, while accepting each other's cultural differences and trying to build equal relationships.

### 2. Background

#### ○ Current Status of Shiga Prefecture

As of the end of December 2024, Shiga Prefecture had a foreign population of 41,475 people, equaling 2.95% of its total population. As of January 1st of 2024, its foreign population ranked 19th nationwide, with the percentage of foreign residents ranking 13th. 97 countries and regions are represented within the foreign community, with Vietnamese, Brazilians, and Chinese accounting for the largest populations. In 2024 the number of foreign workers and students enrolled in public schools requiring Japanese language education reached a record high.

#### ○ Changes in Socioeconomic Conditions

##### <Lessons learned from the Coronavirus and Natural Disasters>

Topics in various fields were highlighted, such as information transmission, medical care, and employment.

##### <Development and Spread of Digital Technology>

The widespread use of machine translation applications has made multilingual support dramatically easier.

##### <National Trends Such as Legal Reforms>

Revisions to the residency status system and formulation of a roadmap for a multicultural society were created.

### 3. Past Efforts and Future Challenges

#### ○ Past Efforts

##### <Communication Support>

Operation of the Shiga Foreign Residents Information Center, etc.

##### <Livelihood Assistance>

Providing information on medical institutions that can offer foreign language support, etc.

##### <Supporting the Activities of Foreign Workers>

Operation of the Shiga Job Support Center for Foreign Residents, etc.

##### <Development of an Educational Environment>

Assistance with carrying out pre-admission guidance for foreign children, etc.

##### <Developing a Multicultural Society>

Holding multicultural coexistence lectures for prefectural residents, etc.

#### ○ Future Challenges

It is increasingly important to be aware that, regardless of nationality, race, or other differences, we are all living in the same community and need to support each other.

##### <Raising Citizens' Awareness of Cultural Coexistence>

It's important to increase opportunities for foreigners to deepen their understanding of Japanese society and customs while appealing to Japanese people.

##### <Strengthening Communication Support>

Both parties need to ensure smooth communication.

##### <Taking Various Stages of Life into Account>

Since the age range of foreigners living within the prefecture has widened, it's necessary to various stages of life.

### 4. Vision for a Multicultural Coexistence and Action Goals

#### ○ Basic Objectives

We're striving for a community where everyone who lives, works, and studies in Shiga Prefecture, regardless of nationality, race, or other differences, can leverage their diversity while respecting each other's rights and individualities.

#### ○ Shiga's Vision of Multicultural Coexistence

• We're aware that, regardless of one's nationality or origins, we are living in the same community and should support each other.

• We're conveying information that is easy for anyone to understand to those who need it.

• We're working towards the practical application of digital technology to communicate to others based on their individual circumstances.

• We're cultivating a more habitable society for everyone, where foreigners can live and work with peace of mind.

• We're fostering a harmonious society where anyone can learn, that can be preserved into the future.

## ○5 Action Goals and 10 Policy Directions for Everyone to Work Towards

### **[Action Goal 1] Raising awareness of multicultural coexistence and creating a vibrant community**

We will work to end prejudice and discrimination, while promoting mutual understanding and creating a vibrant community that leverages each of its strong points.

- (1) Raising awareness of multicultural coexistence**
- (2) Creating a vibrant community that leverages diversity**

### **[Action Goal 2] Promoting heart-to-heart communication**

We will make sure that all prefectural residents can access information necessary for their daily lives and can interact effortlessly in their communities.

- (1) Multilingual information in the community**
- (2) Providing opportunities to learn about the Japanese language and Japanese society**

### **[Action Goal 3] Providing an environment where people can live and work with peace of mind**

We will provide an environment where all prefectural residents can access support services for day-to-day living and live with peace of mind.

- (1) Residential support for peaceful living**
- (2) Development of health, medical, and welfare systems that can be used with peace of mind**
- (3) Disaster response**
- (4) Improving life safety support**

### **[Action Goal 4] Support for participation in the workplace**

As valuable supporters of the local community and society, we want to make sure that foreigners coming to the prefecture seeking employment are effectively and properly welcomed, while at the same time supporting the participation of all prefectural residents in the workplace.

- (1) Effective and proper acceptance and support of participation in the workplace**

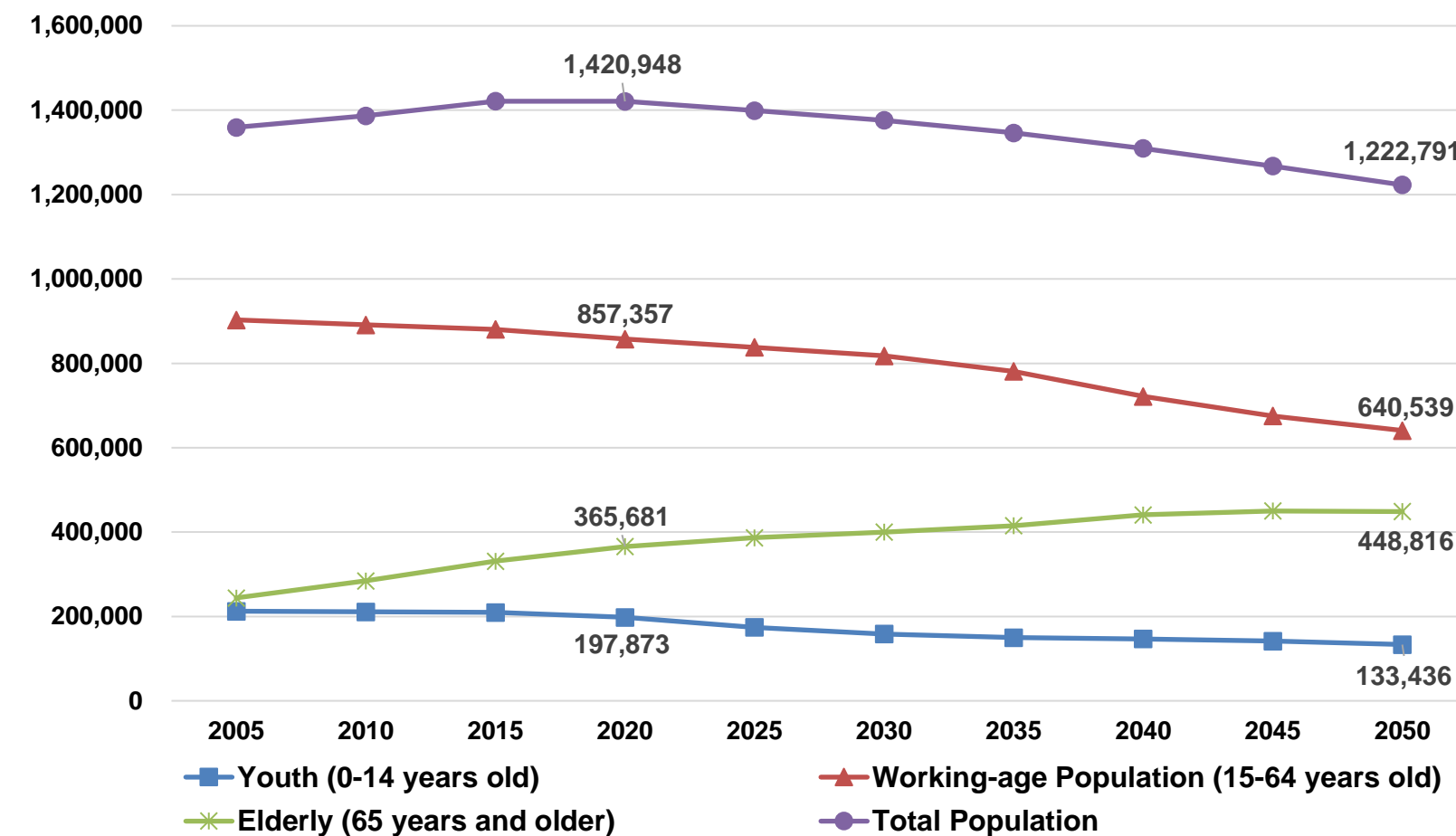
### **[Action Goal 5] Enhancing education and childcare to nurture future generations**

We will create an environment where anyone, regardless of nationality or origins, can access education and childcare equally, and work to build strong, spiritually-rich people who will pave the way for the future.

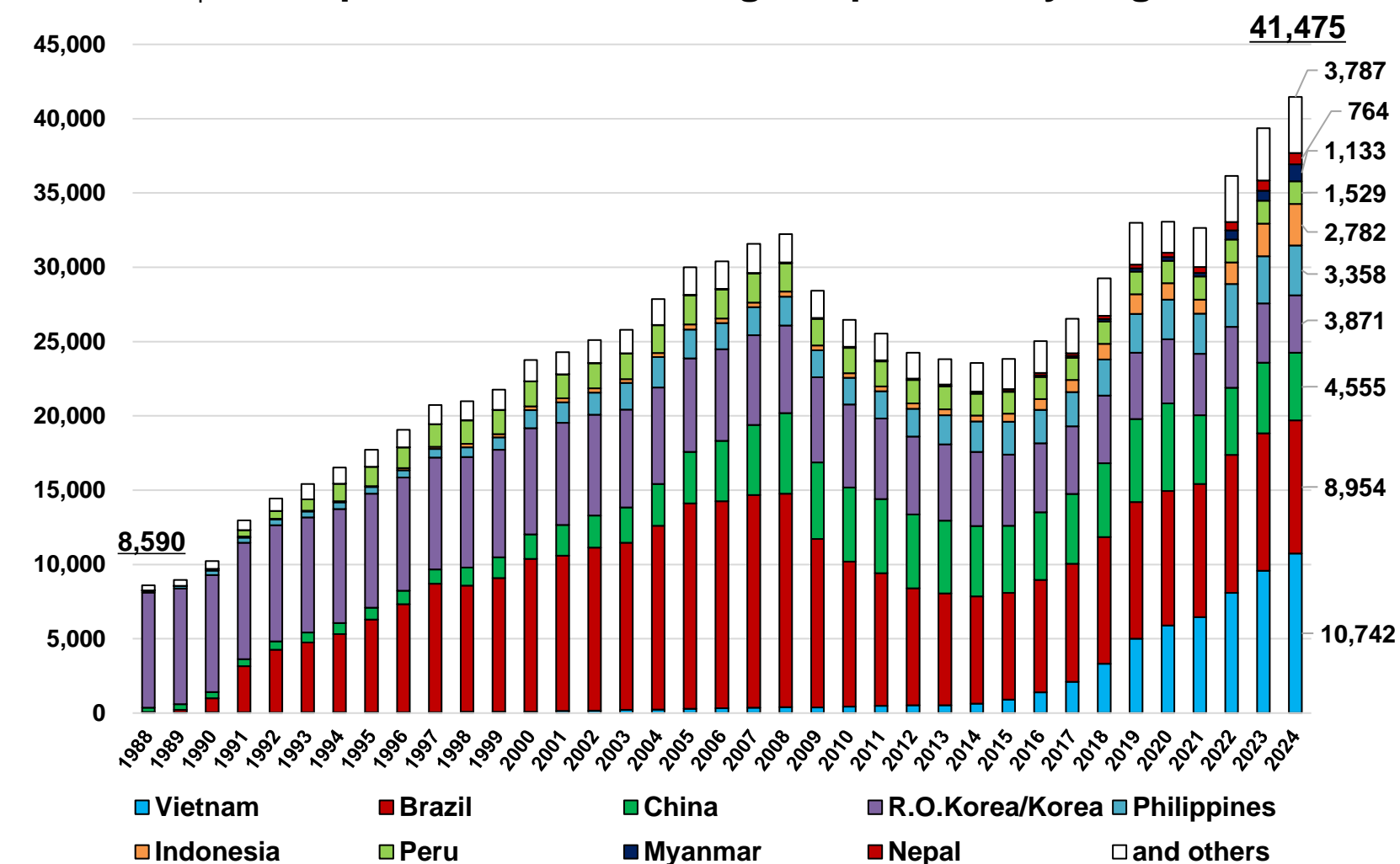
- (1) Improvement of education and childcare conditions**

# State of Affairs in Shiga Prefecture

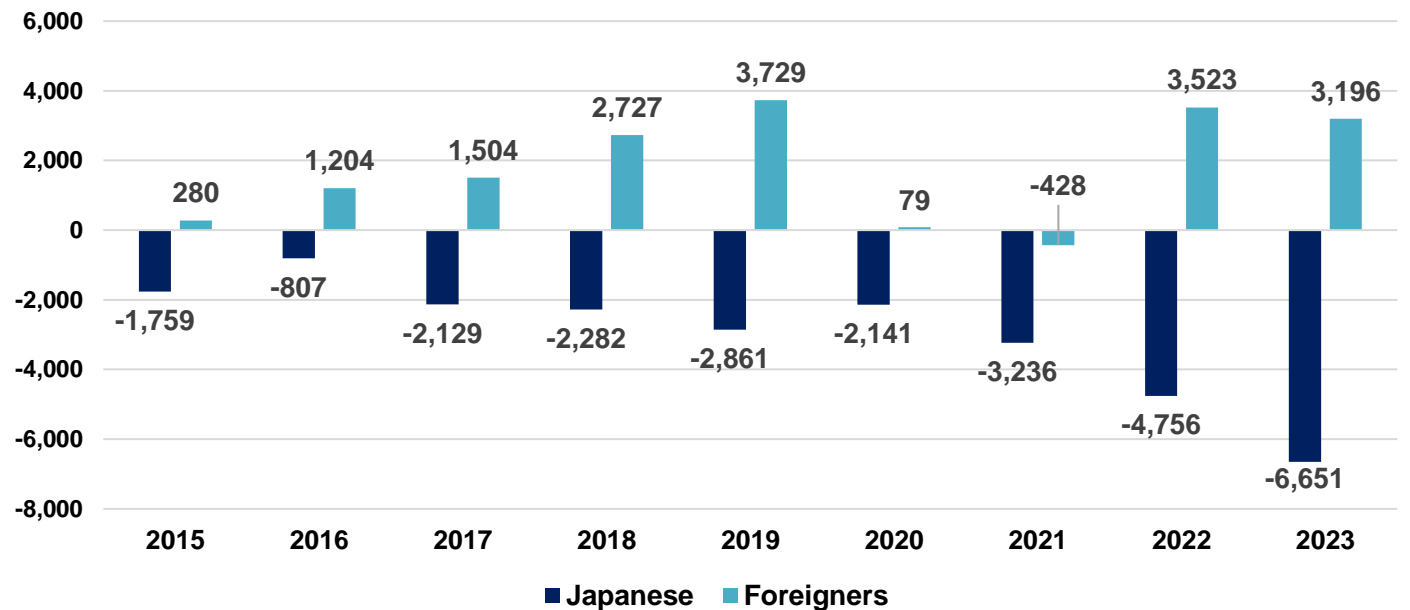
(Number of People) **Graph 1: Population Trends in Shiga Prefecture**



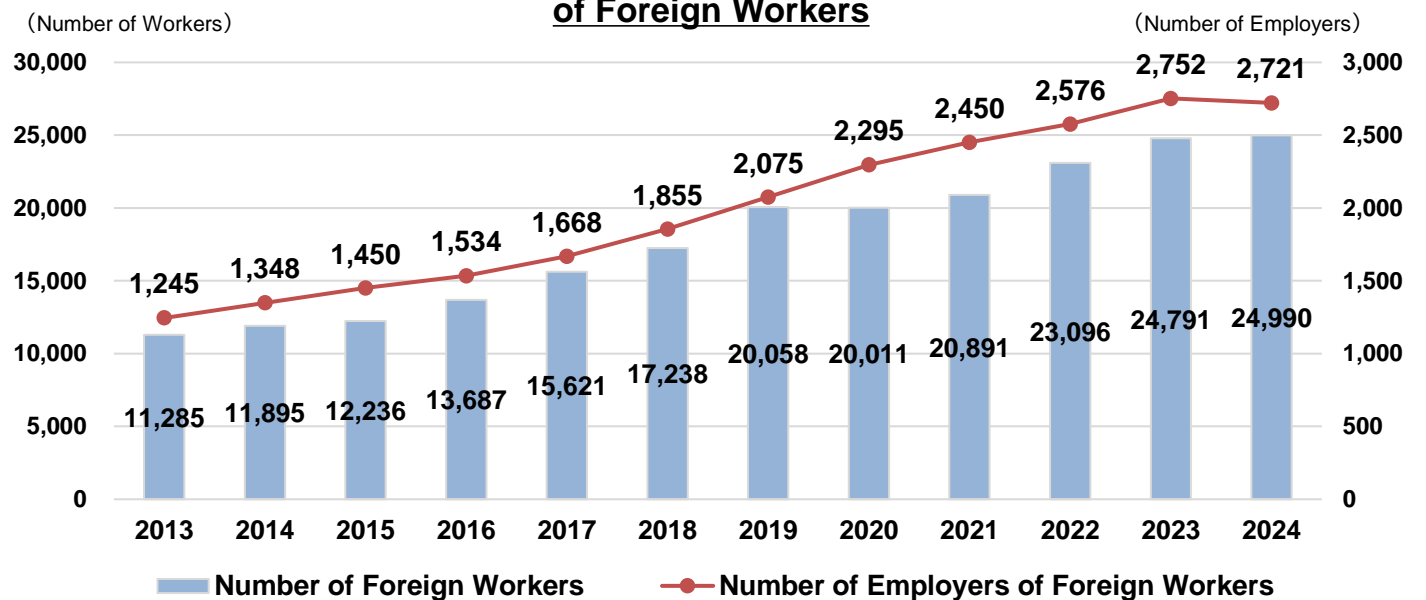
(Number of People) **Graph 2: Trends in Foreign Population by Region**



(Number of People) **Graph 3: Trends in Annual Population for Japanese and Foreigners**



**Graph 4: Trends in the Number of Foreign Workers and Employers of Foreign Workers**



**Graph 5: Trends in the Number of Students Enrolled in Public Schools Requiring Japanese Language Instruction (Including Those of Japanese Nationality)**

