

付 図 3

琵琶湖沿岸帯における湖底状況の写真記録

- ・ 撮影地点は懸濁を避けるために各採集地点から数m離れているため、湖底状況は各測定値と必ずしも一致しない。
- ・ 白いプラスチックで作製した撮影枠の開口部の大きさは、タテ13cm×ヨコ17cm。レンズ先端から撮影枠までの距離は約23cm（撮影枠がない写真も倍率は同じ）。
- ・ コアサンプルは、内径11mm（肉厚1mm）のポリカーボネイトパイプを用いて撮影者が採取したもの。
- ・ 露出は、オートストロボを使用したTTL自動調光。

使用機材：カメラ	ニコンスV型
レンズ	UWニッコール28mmF3.5 接写装置メインユニット装着
ストロボ	スピードライトSB-103 ワイドアダプターSW-103装着
フィルム	フジクロームRD II
色調標本	コダックカラーセパレーション ガイドおよびグレースケール

No.1

宇曾川河口北側

No.2

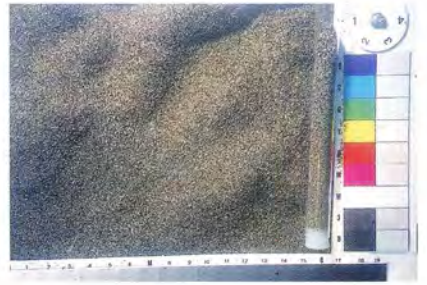
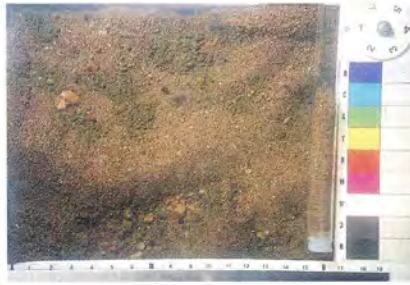
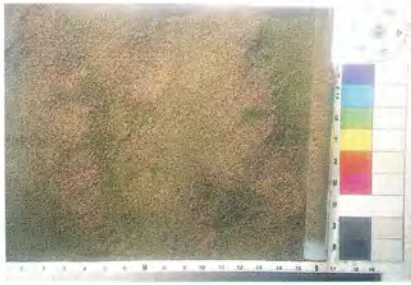
柳川漁港より北300m

No.3

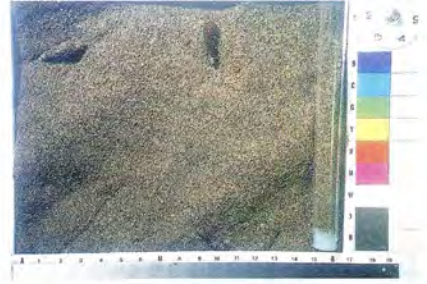
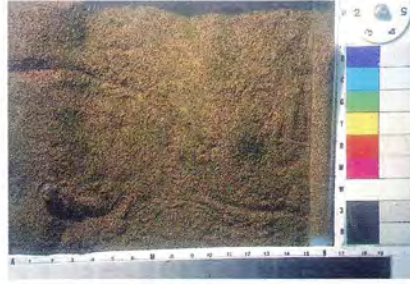
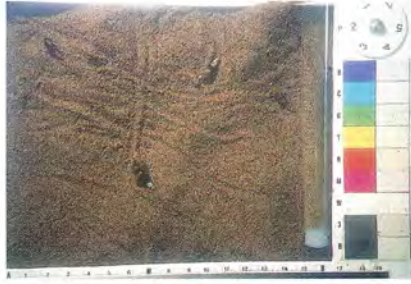
愛知川河口北側

深度

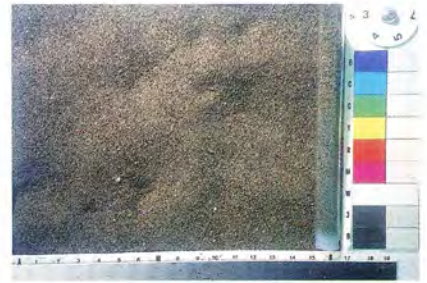
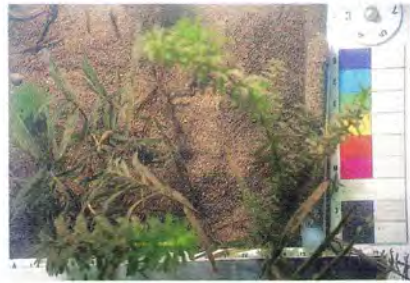
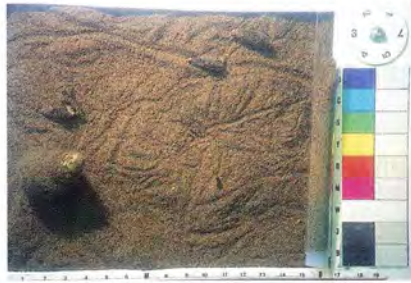
1m



2m



3m



4m



5m



7m



No.4
伊崎不動



欠測

No.5
国民休暇村より南400m



No.6
沖島赤崎



深度

1m



欠測



2m



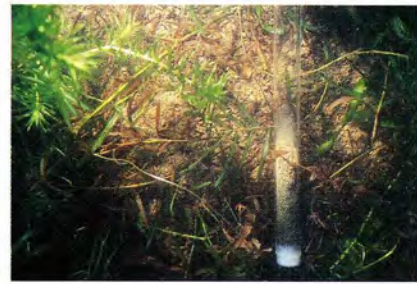
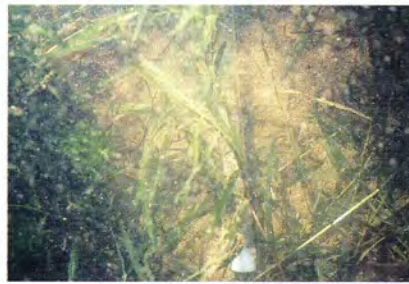
欠測



3m



欠測



4m



欠測



5m



欠測



測点なし

7m

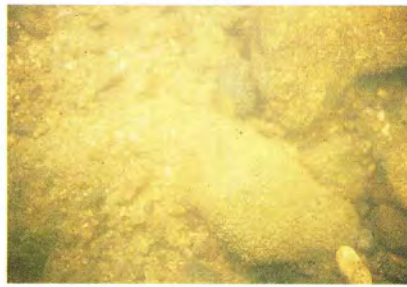
深度
▽

No.7
沖島西側中央

No.8
長命寺港北側

No.9
野村舟溜

1m



2m



3m



4m



5m



7m

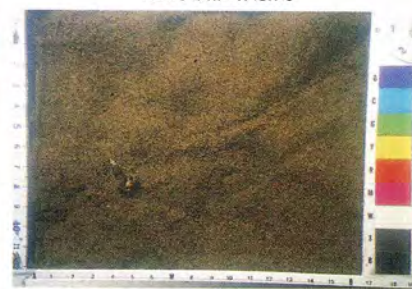
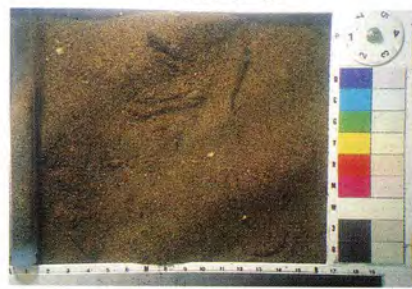
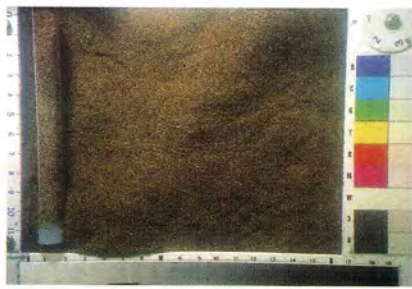


No.10
喜合変電所

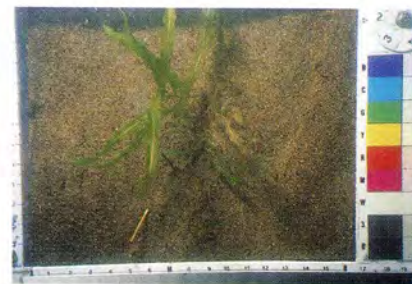
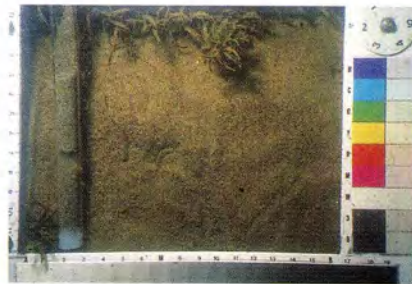
No.11
中主浄水場

No.12
旧野洲川南流

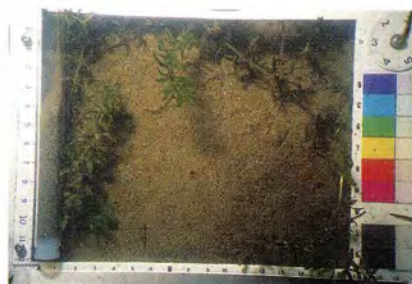
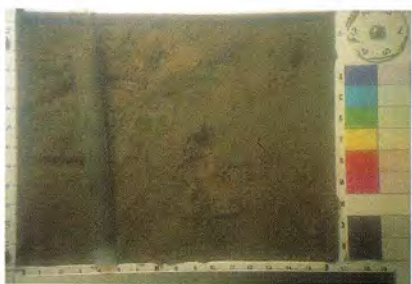
深度



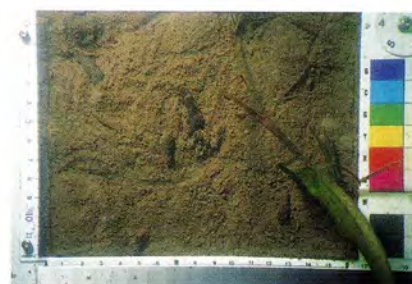
1m



2m



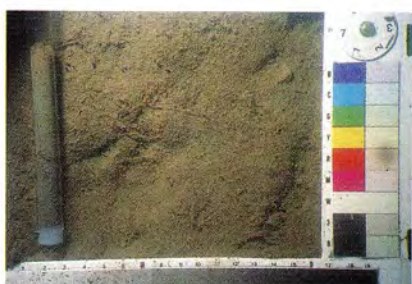
3m



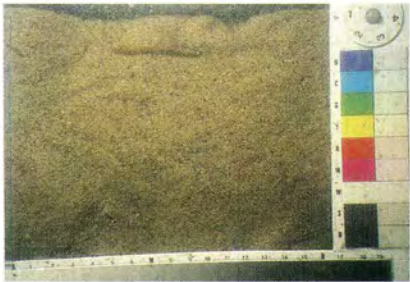


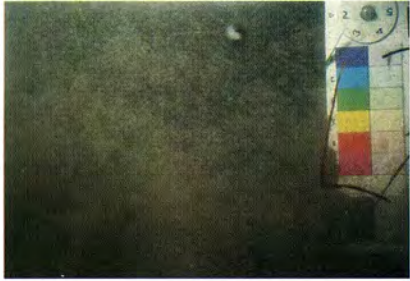










4m



5m



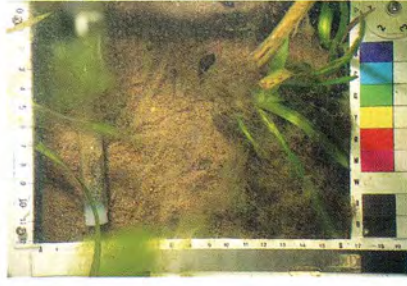
7m

深度	No.13 木浜漁港北側	No.14 烏丸岬	No.15 志那漁港北側
1m			
2m			
3m	欠測		
4m			
5m			
7m	測点なし	測点なし	測点なし

No.16
草津川河口北側



No.17
帰帆島北橋北側



No.18
近江大橋南側



深度

1m



2m



3m



4m



5m



7m

No.19

膳所城跡

No.20

大津港南側

No.21

唐崎神社

深度



1m



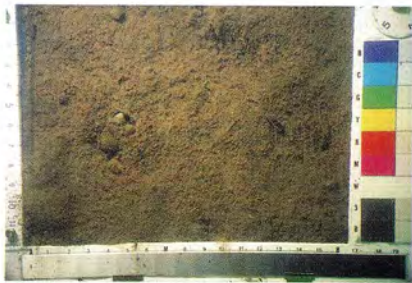
2m



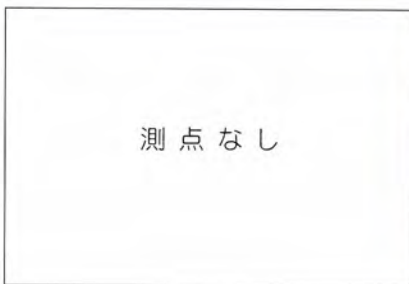
3m



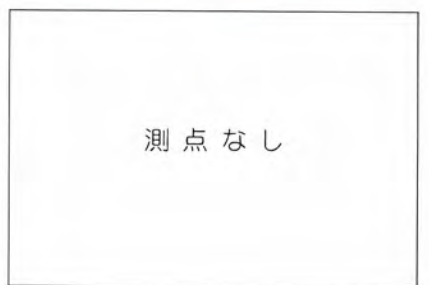
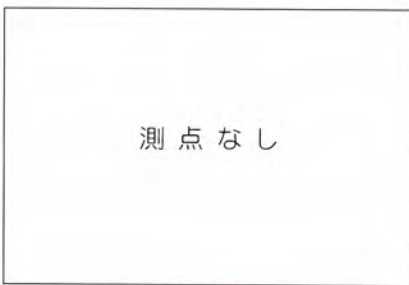
4m



5m



7m

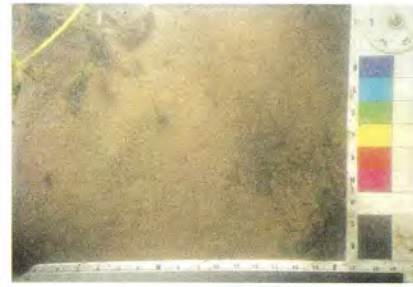
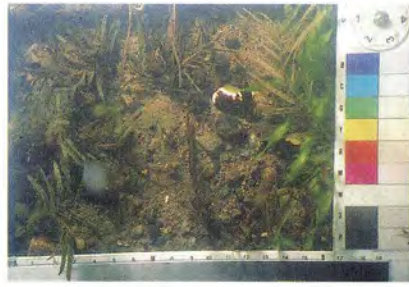
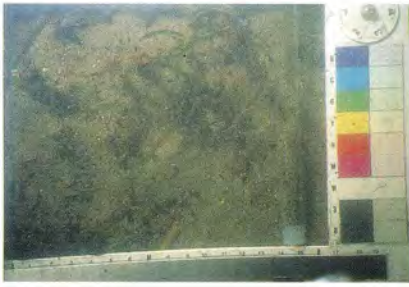


No.22
大宮川河口

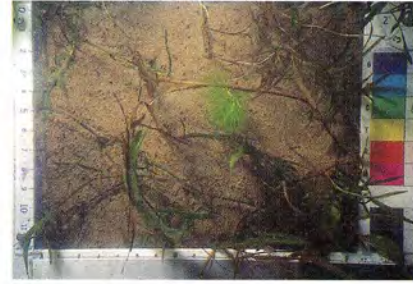
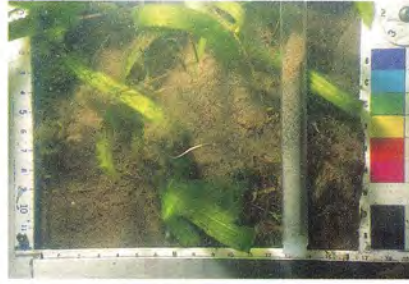
No.23
雄琴港北側

No.24
堅田漁港北側

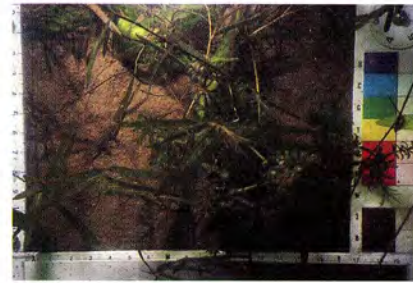
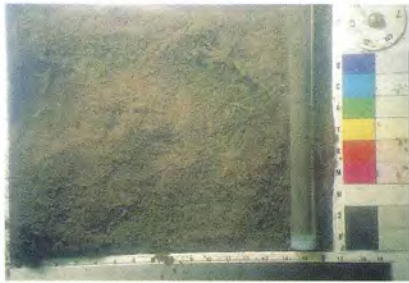
深度



1m



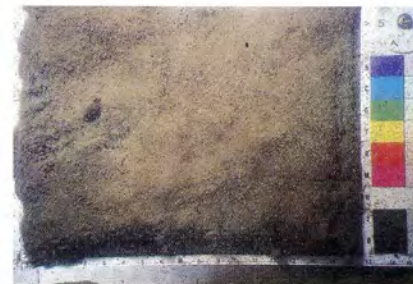
2m



3m



4m



5m



7m

No.25

小野駅南側

No.26

和邇浜木元神社

No.27

志賀駅南側

深度

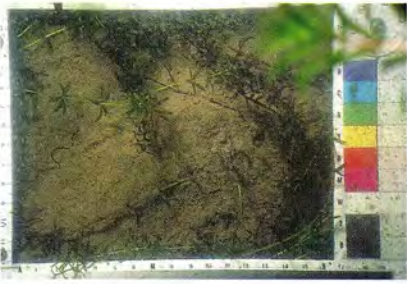
1m



2m



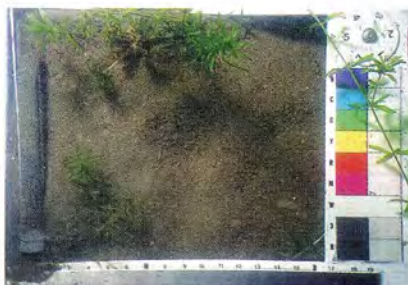
3m



4m



5m



7m

欠測



No.28

北比良集落北側

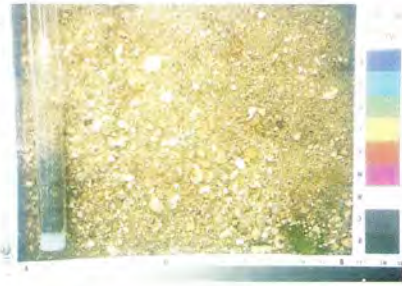
No.29

北小松港南側

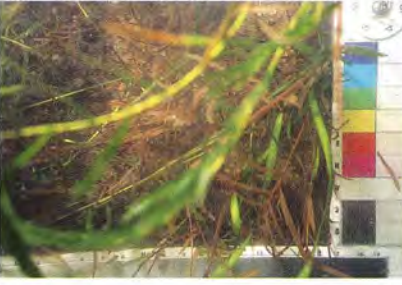
No.30

白鬚神社

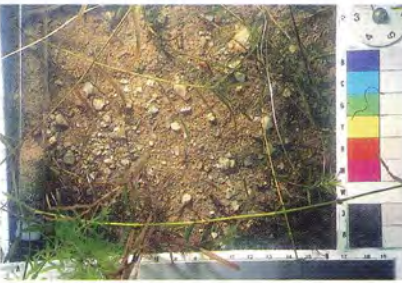
深度



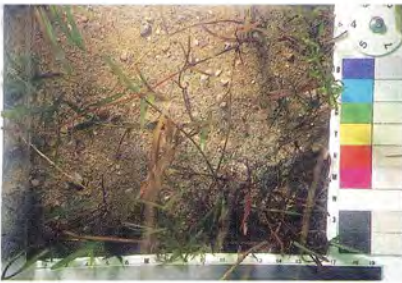
1m



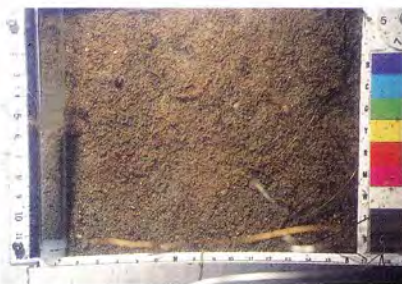
2m



3m



4m



5m



7m

No.31
大溝橋

No.32
鴨川河口北側

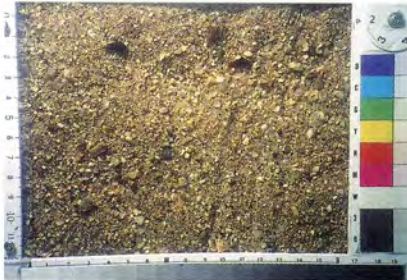
No.33
安曇川南流河口北側

深度

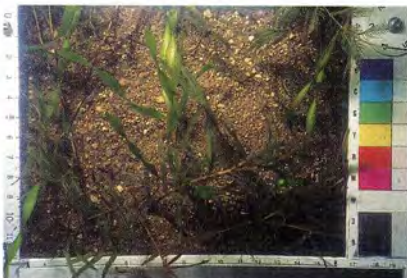
1m



2m



3m



4m



5m



7m



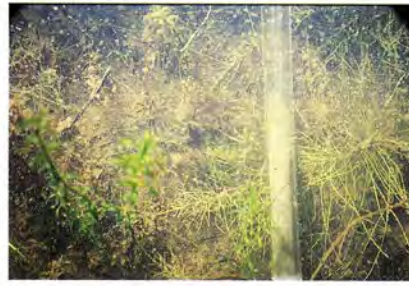
No.34

深溝と藁園集落の間



No.35

饗庭湾奥



No.36

石田川河口北側



深度

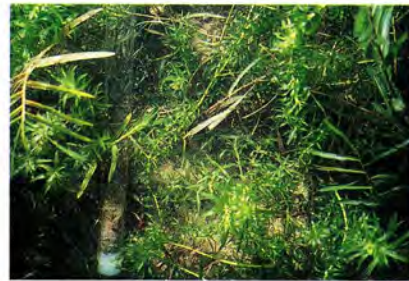
1m



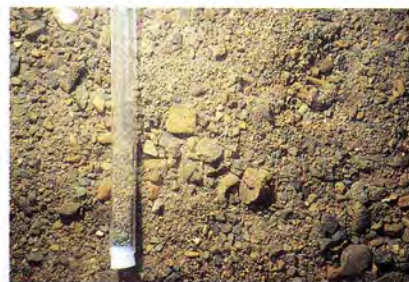
2m



3m



4m



5m



7m

No.37

近江中庄駅

No.38

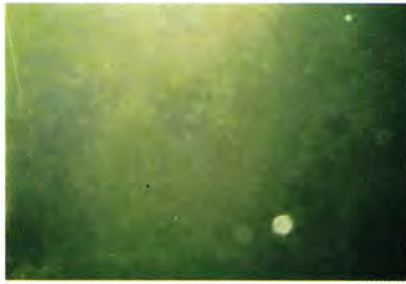
海津漁港より東約300m

No.39

海津大崎より北約1.1km

深度

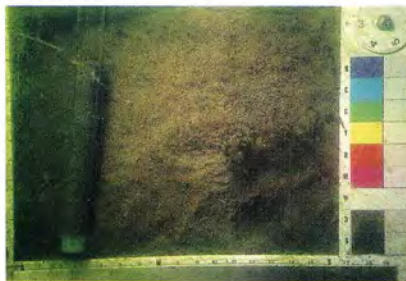
1m



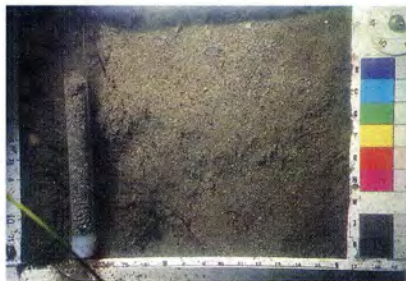
2m



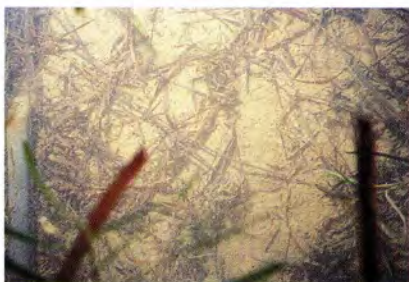
3m



4m



5m



7m



No.40

大浦川河口より南750m

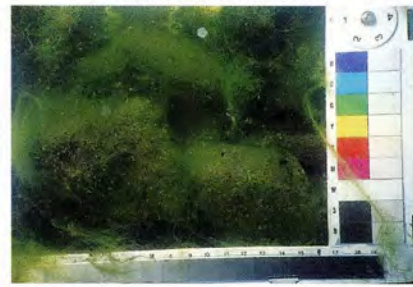
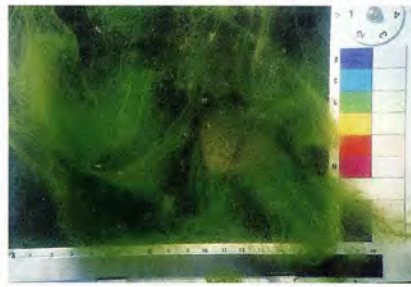
No.41

奥出湾より南約500m

No.42

菅浦集落より南約100m

深度



1m



2m

※撮影枠の深度標示は間違い



3m



4m



5m



7m

No.43

つづら尾崎より北2.2km

深度

No.44

月出集落より南約1km

No.45

塩津湾奥から南約1.1km

1m



2m



3m



※鉄棒は調査船のアンカーのもの



4m



※巻上不良のため7mと一部重複



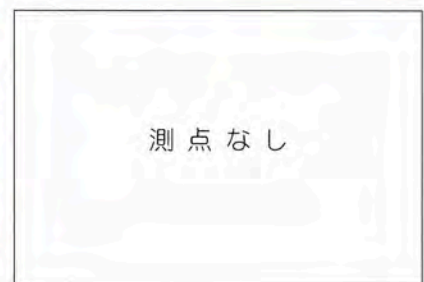
5m



7m



※巻上不良のため4mと一部重複



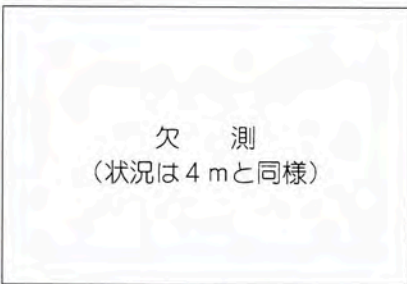
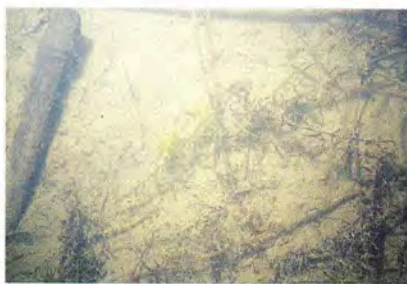
No.46

飯浦集落南側



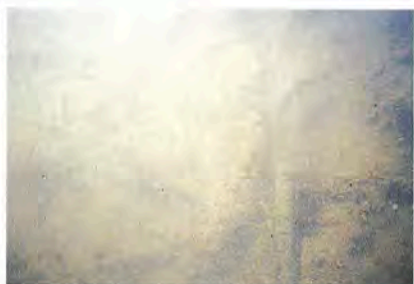
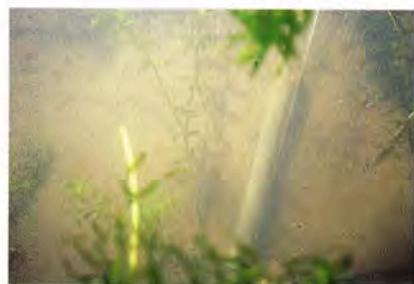
No.47

西野放水路より北約1km



No.48

野田沼北側



深度

1m

2m

3m

4m

5m

7m

No.49

スポーツの森

No.50

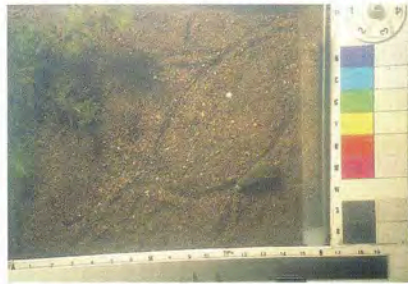
姉川と八木浜舟溜の中間

No.51

川道ヨシ群落南端

深度

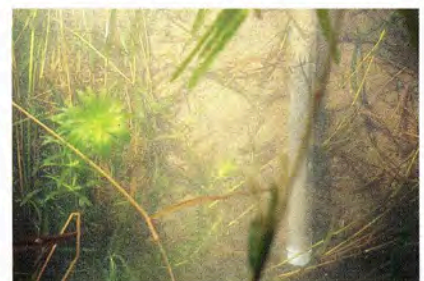
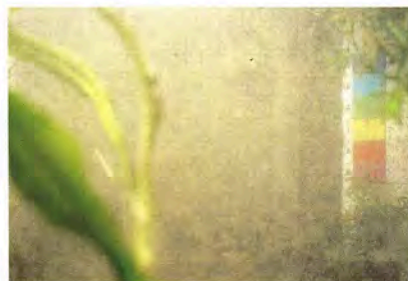
1m



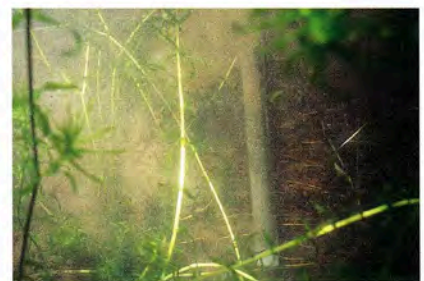
2m



3m



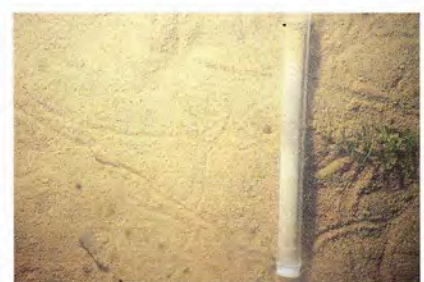
4m



5m



7m



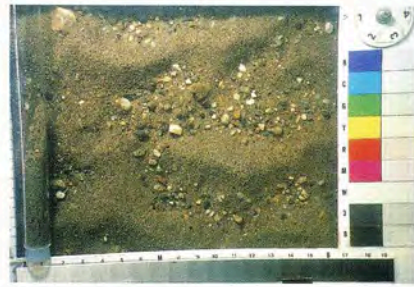
No.52
長浜大仏



No.53
天野川河口北側



No.54
磯神社

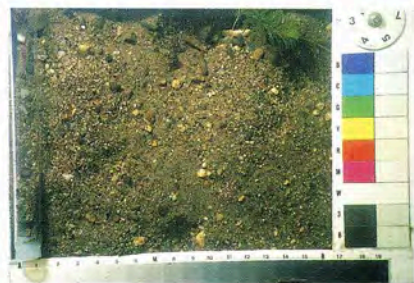


深度

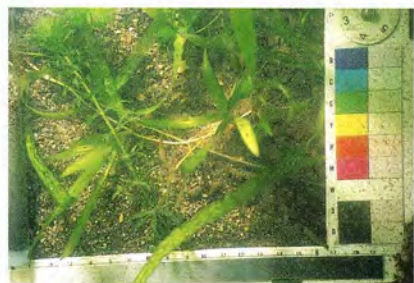
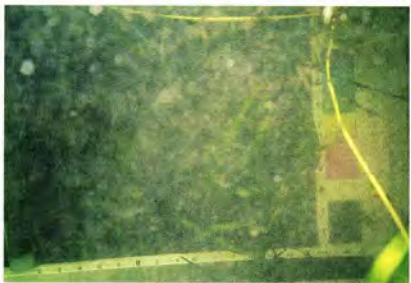
1m



2m



3m



4m



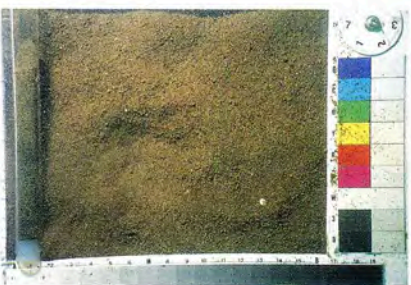
※黒い影はストラップによるケラレ



※礫は撮影者が掘り出したもの



5m



7m

No.55

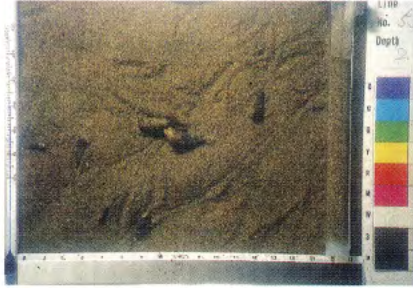
芹川河口南側

深度

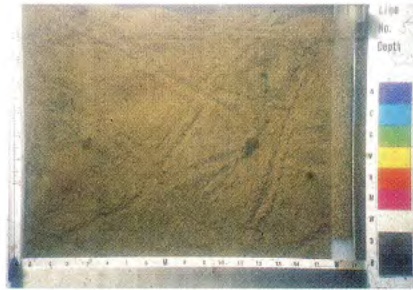
1m



2m



3m



※撮影枠の深度標記は間違い

4m



5m



7m

