

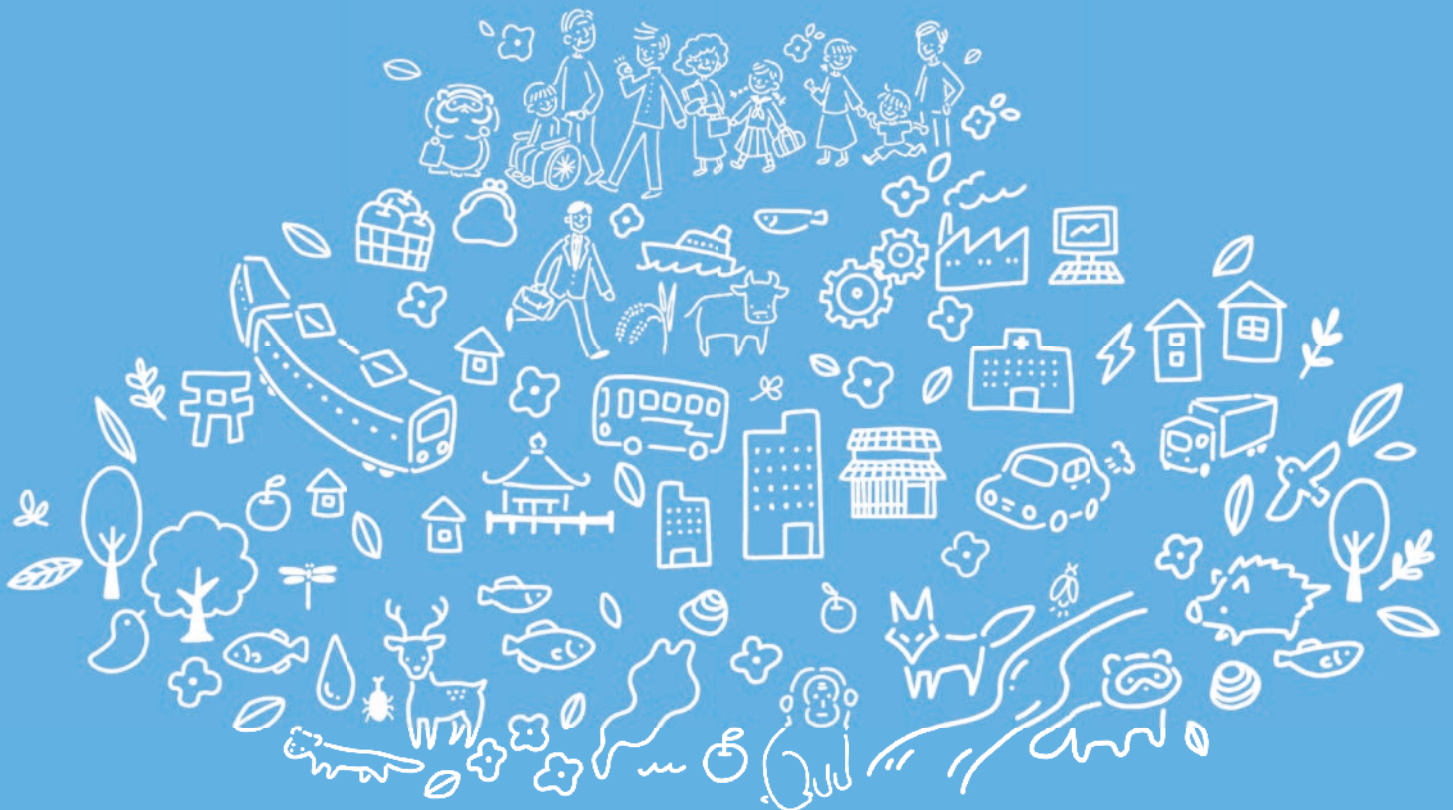
Did you know?



Basic Policy Plan of Shiga Prefecture

**Shiga changes,
Happiness
will last**

-Evolving SHIGA-



Shiga Prefecture

Shiga changes, Happiness will last

-Evolving SHIGA-

Working together toward the Shiga of 2030

To realize our fundamental philosophy we, together with our citizens, are painting a vision of how we see Shiga in the year 2030, from four perspectives: "people," "economy," "society" and "environment."

This initiative aims to make Shiga a sustainable prefecture in which three essential aspects of SDGs: the economy, society, and the environment, are well balanced. Shiga will be a place where people can design the future according to their own perspectives.

This cannot be achieved by the government alone. Citizens, NPOs, corporations, universities, and many other individuals and organizations have to work together to attain the common goals.

Society

Diverse social infrastructure to support the future

From both hardware and software standpoints, we are working to develop a social infrastructure that takes into account the characteristics of the region and supports safe and secure lifestyles and industrial activities to a greater degree than before.

Environment

Abundant blessings from nature preserved for the future

All people and corporations engage in environmentally friendly living and industrial activities. Various organizations put their efforts into environmental conservation activities. Utilizing and recycling local resources healthily, Shiga is abound with a wonderful natural environment, including Lake Biwa, which underpins our lives.



※Evolving SHIGA: Shiga develops flexibly in accordance with changes in the external environment while taking advantage of traditional and cultural resources as well as ancient wisdom. We describe this using the term "evolving."

People Designing the future according to our own perspectives.

Everyone feels connected with others in numerous ways. Regardless of age, gender, illness / disabilities, etc., everyone can live a healthy life both physically and mentally throughout their lifetime, their healthy life expectancy extended.

In addition, individuals can choose their own "flexible and diverse life course." They can play active roles throughout their lives and challenge themselves over and over.

Economy Industries creating new values to clear the path to the future

While concerned about the environment and society, positive economic developments are promoted in: ICT, IoT, AI, robotics technology, the response to the fourth industrial revolution, including utilization of data, as well as creation, transformation, and expansion of industries with focusses on growing markets and new fields of endeavor. This expands the efforts to solve social issues, creating various industries and jobs to support the growth of Shiga in the Society 5.0 era.



Everyone wishes to be "happy."
What "happy" means varies according to the individual values.
And these values also change with the times.
We are now facing significant changes. Changes that the world has never experienced before.
During these times of unfamiliar changes, we maintain our flexibility and take action as necessary. We work together to make Shiga a place where everyone can feel fulfilled.

People

Designing the future according to our own perspectives.



We are in the era of longevity referred to as "100 years of life." Shiga Prefecture promotes improvement of the environment so that everyone can live a healthy life, both physically and mentally, and also can freely and flexibly envision their life course.

Policy Direction of Shiga Prefecture

- Lifelong health promotion and healthcare for disease prevention
- Medical and welfare services provided seamlessly from the beginning to the end of life
- Creation of a society in which everyone has a place to be and a purpose in life and can play an active role throughout their life
- Improvement of the environment such that all of society is involved in child-raising in some way
- Education aimed at giving children the fortitude and resilience to live long and healthy lives
- Creating a society in which people can engage in lifelong learning and stay active in various fields throughout life



Major Fields

Japan's longest healthy life expectancy / Disease prevention
Healthcare and welfare services for community

Mental health care / Culture and sports
Childcare and education

Recurrent education / Support for repeat-challenges
Promotion of teleworking

Economy

Industries creating new values to clear the path to the future



In the midst of drastic changes in the global economic situation, technological innovation, and changes in the employment structure, Shiga Prefecture is creating local highly competitive industries, as well as supporting development and securing diverse human resources and business succession through a global management perspective and advanced technology.

Policy Direction of Shiga Prefecture

- Creation of local highly competitive industries through a global management perspective and advanced technology
- Support for securing of diverse human resources and business succession through diversification of work style and improvements to the working environment
- Establishment of a strong agriculture, forestry, and fishery industries through improved productivity and increased added value



Water environment business
(JICA Partnership Project / Vietnam)



Omi beef

Major Fields

IoT / AI / Innovation / ESG management

Diversity / Advancing Human Resources Development
Business succession

Smart agriculture / Organic
Tourism and the appeal of Shiga to the world

Society



Diverse social infrastructure to support the future

Each region in Shiga is undergoing change due to declining population and aging. Shiga Prefecture is improving social infrastructure including roads, rivers, and ICT environment, which underlies local communities. We also develop communities in which a diversity residents participate together in community-building.

Policy Direction of Shiga Prefecture

- Improvement of social infrastructure to build "compact communities" in which people can easily get around and have more opportunities to interact with others
- Creation of safe and secure communities that support everyday lives of people
- Support for the sustainable succession of the agriculture, forestry, and fishery industries which have multilateral values
- Creation of an inclusive society in which a diversity of people accept and support each other



Terraced paddy field



Major Fields

Resilient infrastructure / Compact communities
ICT platforms

Public transportation in communities
Local communities

Sustainable agriculture, forestry, and fishery industries

Safety and Security / Disaster control / Inclusive society

Environment

Abundant blessings
from nature preserved
for the future



In a global trend of socioeconomic activities, Shiga Prefecture is working on conservation and recovery of Lake Biwa and its surrounding environment, utilizing resources from it, responding to global environmental issues, and developing human resources to create a sustainable society.

Policy Direction of Shiga Prefecture

- Conservation and recovery of the environment surrounding Lake Biwa and utilization of natural resources
- Response to changing climate and reduction of environmental burdens
- Learning, lifestyle, international collaboration and cooperation to support a sustainable society



Forest study project
“Yama no Ko (Child of the Mountain)”
(Observing pruning work)



Biwa trout



Umi no Ko (Child of the Lake)
(Floating school on Lake Biwa)

Major Fields

Conservation and recovery of Lake Biwa
and utilization of its natural resources
Recycling of local resources

Response to changing climate
Low-carbon or decarbonized society

Healthy Mountain Project (Management and
utilization of mountain districts)
Development of human resources to support the environment

What's the "Basic Policy Plan of Shiga Prefecture"?

●Working together with our citizens, we realize our vision for the future.

The "Basic Policy Plan of Shiga Prefecture" is a vision of the future in Shiga. Shiga Prefecture is working to realize the vision, together with our citizens.

●We apply SDG characteristics to realize this vision.

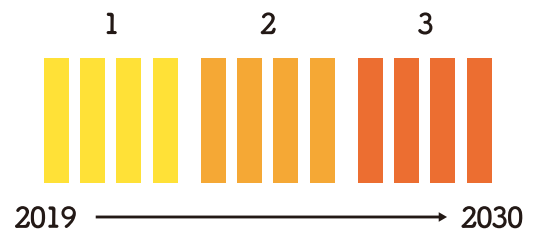
In this "Basic Policy Plan," we are painting a vision of how we see Shiga in the year 2030. We picture Shiga as a sustainable prefecture where people can design the future according to their own perspectives. We are going to realize this vision through the three essential aspects of SDGs: the economy, society, and the environment.

●Twelve-year plan to 2030.

Soon, we will face major social changes including the decline and rapid aging of the population, technological innovation referred to as the fourth industrial revolution, and the development of high-speed transportation systems, such as Linear Chuo Shinkansen, which may put a new complexion on the city. This "Basic Policy Plan" is to be implemented over twelve years, from the fiscal year 2019 to 2030, looking ahead to the future even after the above changes.

Implementation schedule of the "Basic Policy Plan of Shiga Prefecture"

In order to make steady progress of the actions based on the basic policy plan, we divide the twelve-year plan into three period, four years each, and make "action plan" for each period.



Features of Shiga Prefecture which can be utilized to realize the vision

- Japan's longest healthy life expectancy
- Intellectual resources obtained from academic facilities including universities located in Shiga, and citizens who are willing to learn
- Citizens who enjoy sports and exercise
- The principle of "three-way satisfaction (seller satisfaction, buyer satisfaction, societal satisfaction)" that has been the mantra of the Oumi merchants
- Resident autonomy to protect their community
- The spirit of inclusive society in which each person is acknowledged
- Excellent location with easy access to both the Pacific and the Japan Sea areas, which functions as a hub for the economic sphere
- Unique manufacturing and craftsmanship technologies developed thanks to the many R&D facilities located in Shiga
- Rich history, culture, and art
- Wonderful natural environment and lifestyle
- Eco-friendly agriculture, forestry, and fisheries that coexist with Lake Biwa, and a variety of food cultures
- Lake Biwa, a "national treasure" possessing valuable assets
- Environment in which forest, river, town, and lake coexist
- Contribution to the conservation of lakes and marsh environments around the world

What are "SDGs" ?

SDGs (Sustainable Development Goals) are 17 goals that international societies, in both developing and developed countries, should work to attain by 2030. They were adopted at the United Nations Summit in September 2015.

We are said to be the last generation able to save the Earth.

In order to create a sustainable society, it is required to comprehensively address these three issues: stimulation of economic growth, social inclusion ("to leave no one behind"), and environmental preservation.

SUSTAINABLE DEVELOPMENT GOALS



SHIGA x SDGs

Shiga Prefectural Government adopts the perspective of Sustainable Development Goals (SDGs) of the United Nations.

Basic Policy Plan of Shiga Prefecture

Shiga changes, Happiness will last
-Evolving SHIGA-
Formulated in March 2019

Published by: Shiga Prefecture
(Planning and Coordination Division,
General Planning Department)

Kyomachi 4-1-1, Otsu City, Shiga Prefecture
TEL 077(528)3312 / FAX 077(528)4830
E-mail kikaku02@pref.shiga.lg.jp
HP <https://www.pref.shiga.lg.jp/>



滋賀県基本構想

